

### This is the life

"We redesigned the floor plan around our different needs as a family, and with three teenage sons at home, creating numerous living zones was a top priority," says Pam of her renovated home in Melbourne. "Now the house accommodates all of us, with a TV room and games space for the boys and plenty of quiet, relaxing rooms for me – although it's great when we all get together at meal times in the dining area," she says.

# The bigger picture

A kitchen reno morphed into a total makeover for this much loved and beautifully updated Victorian-era home.

PRODUCED BY RUTH WELSBY | PHOTOGRAPHY RHIANNON SLATTER

H&G houses

### Original features and contemporary style coexist in the formal living room.

The eye-catching Moooi Random pendant light draws attention to the gorgeous details in the formal living room's pressed-metal ceiling. Window seat upholstered in Mokum Angkor Wat II fabric. Drum stools from Retail Therapy Interior Design. **OPPOSITE** Pam in the delightful entrance hallway. Manuel Canovas Trellis wallpaper from Geraldine Cooper. Moooi Paper chandelier. Arik Levy Mixit side table from Chairbiz. **For Where to Buy, see page 204.**





**CLOCKWISE FROM ABOVE LEFT** A vintage poster from the Letitia Morris Gallery brightens a wall in the open-plan area. Chairs from Retail Therapy Interior Design. The sleek kitchen has an island bench in Caesarstone Snow. Joinery in Sublime Walnut Laminex. A breakfast bar on the eastern side of the kitchen opens to the outdoor dining area. In the living area, the TV is mounted in a custom-made frame. Floor lamp from Artemide. Sofas from Jordan. Rug from Designer Rugs. **OPPOSITE** Jack, 13, enjoys a book in the open-plan kitchen/dining/living zone. Frameless bifold doors open out onto the courtyard. **For Where to Buy, see page 204.**



## H&G houses

### Eco savvy

Pam and Terry were keen to introduce environmentally friendly elements into their home's redesign. "Having a pool meant we needed to be responsible with our water consumption, so we installed three 5000-litre underground water-storage tanks," says Pam. "We also put sensors on the lights – which are great because the boys always forget to turn the lights off!"

**T**he aim was to start on a straightforward kitchen update but, as many owners discover, a wholehearted renovation can prove to be a more efficient use of money, time and energy in the long run. Short-term pain for long-term gain, as they say.

So it is that Pam and Terry Lewis and their three teenage sons are now enjoying the benefits of a total makeover of their large Victorian home in Melbourne's south-eastern suburbs.

The couple fell for the property's beautiful bones and grand proportions eight years ago but disliked the decor and restrictive layout. "We could see its potential straight away and said we'd update sooner rather than later, but we lived with it for a while," says Pam. The lacklustre kitchen and rear extension soon wore them down, however, so Pam and Terry called Preston Lane Architects to discuss the rejuvenation of the space.

It was soon apparent that this was a now-or-never scenario, so the couple decided to extend their original brief and embrace a total home renovation, with a new family-friendly layout and decorative revamp at the top of their wish list. "As we discussed ideas for the new kitchen it quickly evolved into a much bigger project," says architect Nathanael Preston. "So, I called in interior designer Carolyn Burns-McCrave of Retail Therapy Interior Design, to pull the whole look together."

The renovation entailed makeovers of the existing formal living room, five bedrooms, three bathrooms and an open-plan kitchen/dining/living zone. A side extension was also added, to house a new study, TV room and garage.

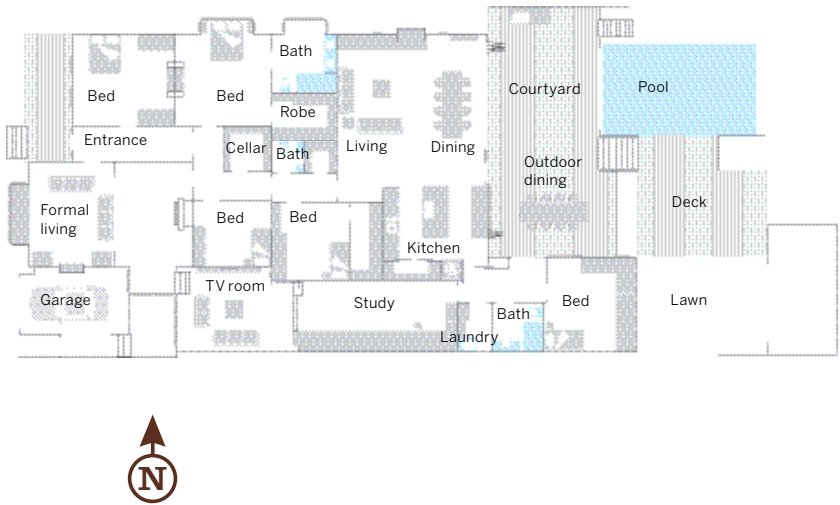
Pam's brief to Carolyn focused on making the home contemporary while retaining its original features, but she was open to new ideas – much to the interior designer's delight. ➤







**TOP** Colour was kept to a minimum in the main bedroom. Grasscloth wallpaper from Baresque. Tolomeo bedside lights from Artemide. Wicker chair from Retail Therapy Interior Design. Throw from Moss Melbourne. **BOTTOM** Jack's bedroom, at the front of the house, retains the original pressed-metal panels. Lamp from Ikea. **OPPOSITE** In the glamorous ensuite, the couple opted for Bisazza mosaic wall tiles and Romeo Babe wall-mounted lights from Euroluce. Floor tiles, basin and tap from Reece. **For Where to Buy, see page 204.**



Paint colours are reproduced as accurately as printing processes will allow.



**Pam opted for a muted colour palette of smudgy taupes and browns to create a cosy and relaxing atmosphere.**

< “Pam’s willingness to push her design boundaries enabled us to play with texture, pattern and scale in a witty and unexpected manner,” says Carolyn.

The home’s entrance corridor is a feast for the eyes. Original, pressed-metal wall panels give a sense of tradition, while geometric wallpaper and a whimsical light fitting infuse the area with a playful charm. Original features and contemporary style also blend together in the formal living room. Pam opted for a muted colour palette of smudgy taupes and browns to create a cosy and relaxing atmosphere.

Up the hall, the main bedroom feels like a hotel retreat, wrapped in textured grasscloth wallpaper. It meets Pam and Terry’s request for a pared-back room and contrasts with the dazzling ensuite.

The full scale of the renovation reveals itself in the light-soaked kitchen/dining/living room

at the rear, which overlooks a covered terrace and pool area. Pam wanted the space, with its soaring ceilings and expansive proportions, to be left uncluttered, so the room was furnished sparingly. Here, frameless bifold doors link the inside to the pool area. Pam’s pride and joy is the stylish yet practical family kitchen, particularly the walk-in-pantry.

Fourteen months is a long time to wait for a basic kitchen update, but Pam and Terry couldn’t be happier with their decision to go that little bit further. “I couldn’t wait to move back in,” says Pam. “I still pinch myself that it’s ours.” **H&G**

**Architect:** Preston Lane Architects, South Yarra Victoria; (03) 9827 8902 or [www.prestonlanearchitects.com.au](http://www.prestonlanearchitects.com.au). **Interior designer:** Retail Therapy Interior Design, Nunawading, Victoria; 0425 801 130 or [www.retailtherapyid.com.au](http://www.retailtherapyid.com.au).

**Colour palette**

Dulux Vivid White  
(kitchen/dining/living area)

Taubmans Twiggy  
(formal living)

Taubmans Bear’s Foot  
(boys’ bedrooms)

**Add a dash of...**

Dulux Citrus Delight

Vivid lime livens up a  
subdued colour scheme.