

# ACTON HOUSE

ACTON PARK, TASMANIA, AUSTRALIA

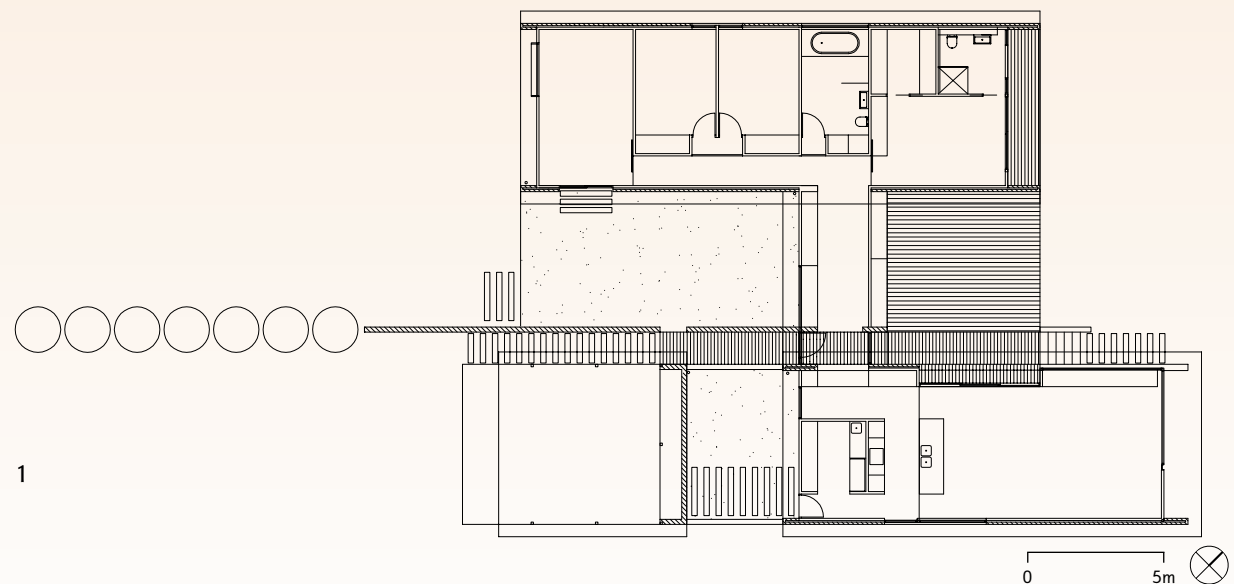
PRESTON LANE ARCHITECTS PTY LTD WITH INTERIA

Acton House is located on the northern edge of a broadacre rural property in the heart of Acton Park, Tasmania. A row of pine trees lines the northern boundary, with access to the site via a long driveway from the south. The project brief was to provide a contemporary residence free from clutter and offering a clear separation between the public and private spaces of the house. As a result the plan is composed of two pavilions: one for living and one for sleeping.

The house has been sited to maximise views over the property's rural setting, while making use of existing vegetation on the site to conceal neighbouring properties. Its orientation aligns with the row of pine trees, and terminates with the broad landscape view to the east.

Stretching out into the landscape, a stack bond concrete block wall defines the entry to the house. A row of trees was planted on this axis to help further delineate the entry. When these trees mature they will also conceal an existing kennel building on the site. On approach to the front door, timber decking aligns with the concrete wall and continues into the house, through a window and out the other side, enhancing the connection to the outside.

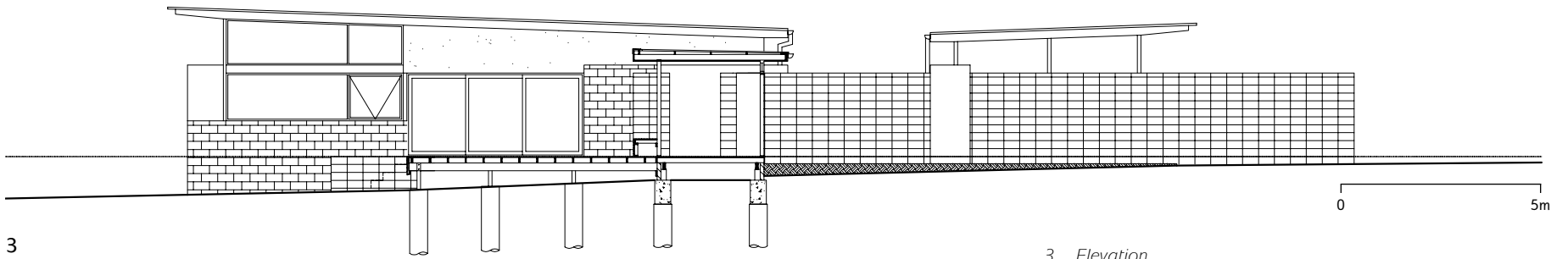
Masonry walls flank both pavilions in an east-west direction, setting up a dialogue with the row of pine trees and providing a sense of containment from within. The pavilions are connected by a gallery/study area adjacent to the entry. A deck and courtyard space are located on either side of this gallery, providing external areas that are sheltered from the wind at different times of the day. These spaces also provide the owners with privacy from a riding trail that circles the property.



- 1 Floor plan
- 2 Northern elevation

2





3 Elevation

4 Front entry

5 Private deck space

6 View of the living space

7 View of the kitchen

8 Gallery space with concealed study

Photography: Jonathan Wherrett





6



7



8